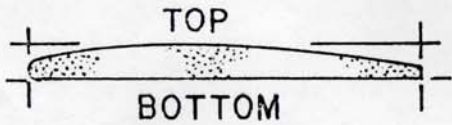
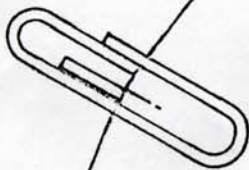


1. TRACE WING OUTLINE, BALANCE POINT, AND OTHER MARKINGS ON THE BOTTOM OF A 5/32 THICK FOAM TRAY. CUT AND SANDPAPER TO OUTLINE SHAPE.

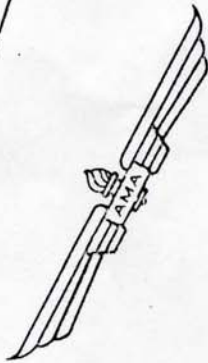
2. SANDPAPER ENTIRE WING TO AIRFOIL SHAPE ABOUT LIKE THIS:



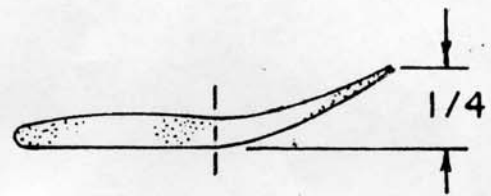
3. GLUE A PAPER CLIP SECURELY IN PLACE.



BALANCE POINT

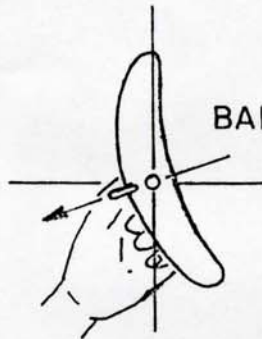


4. CAREFULLY BEND UP SHADED PART OF THE TIPS LIKE THIS:



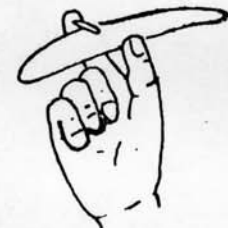
5. ADD NOSE WEIGHT IF NECESSARY UNTIL GLIDER HANGS LEVEL OR SLIGHTLY NOSE DOWN WHEN BALANCED AT BALANCE POINT.

6. READ ADJUSTMENT TIPS IN TEXT.



BALANCING

LAUNCHING



ZANONIA SEED
A SIMPLE FOAM GLIDER
FOR INDOOR OR OUTDOOR FLYING